



For more information, please contact:
COHEN COMMERCIAL REALTY, INC.
info@cohencommercial.com
P I 561.471.0212
F I 561.471.5905
www.cohencommercial.com

FOR IMMEDIATE RELEASE

Contact: Karen Cohen
marketing@cohencommercial.com

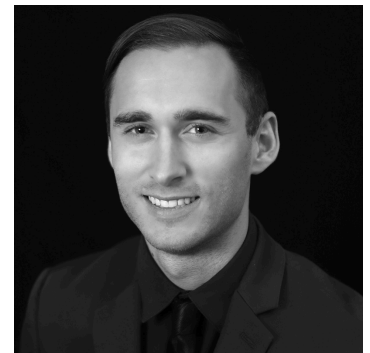
CCR Signs Ebisu to Jupiter West Plaza

October 2024 (Jupiter, Fla.) - Bryan S. Cohen, Chris McCarthy and Austin Alves of Cohen Commercial Realty, Inc., are proud to announce the signing of Ebisu to a 2,800 square foot restaurant space in Jupiter West Plaza located at 6779 W Indiantown Rd STE 18 in Jupiter, FL. Cohen Commercial Realty, Inc. represented the landlord, Precise Property, Inc., in this transaction.

Since 1992, Ebisu has been serving fresh, delicious Japanese cuisine in Palm Beach Gardens. Conveniently located along PGA Boulevard near the Florida Turnpike and I-95, they are in the LA Fitness Plaza, and now will be opening their second location in Jupiter West Plaza.

About Cohen Commercial Realty, Inc. — Cohen Commercial Realty, Inc. and Cohen Commercial Management, LLC, are full-service commercial real estate brokerage and management companies dedicated to fulfilling client needs quickly and efficiently throughout the entire state of Florida.

Our team boasts extensive experience in site selection, shopping center sales and leasing, landlord and tenant representation, investment sales and property management. With additional expertise in land development, land sales and leasing, and business brokerage, Cohen Commercial Realty proudly offers the know-how to solve virtually any property challenge with the dedication and precision to provide a completed solution to all of our clients' needs.



Mr. McCarthy was born and raised in Palm Beach County. A graduate of Florida State University, Mr. McCarthy has completed transactions with notable tenants such as Tenet Healthcare, Red Crab, KFC, Ollie's Bargain Outlet, Humana, Fitness Together, La Colonia Medical Center, Elite Hearing Centers, Starbucks, Dollar Tree, Florida Medical Partners, IVX Health, Liberty Health Sciences, LensCrafters, Tropical Smoothie and Horizon Yachts. He has represented landlords such as Regency Centers, SITE Centers, Black Creek Corporation, RPT Realty, and Keith Corporation.

Mr. Alves was born and raised in New Jersey and moved to South Florida in 2014. A graduate of Florida Atlantic University, Mr. Alves earned a Bachelor of Business Administration in Marketing while interning at Cohen Commercial Realty. Upon graduation and successful completion of his internship and licensure, Mr. Alves joined the Cohen Commercial team full-time as a leasing and sales associate. Mr. Alves oversees more than 1 million square feet, handling properties all over Florida. He provides a high level of experience from leasing 100,000-square-foot anchored shopping centers to sales of owner-user buildings. He has completed transactions with Aldi, Humana, Dollar Tree, Jersey Mikes, T-Mobile, LensCrafters, and more.

Licensed Real Estate Broker

All information regarding this property has been obtained from sources believed to be reliable. We make no guarantee, warranty or representation about it. It is your responsibility to independently confirm its accuracy and completeness. Any projections, assumptions, opinions or estimates used are for example only and do not represent the current or future performance. You and your advisors should conduct a careful, independent investigation of the property to determine to your satisfaction the suitability of the property for your needs.