



Coming Available in 2020
± 3,500 & ± 1,400 SF

JUPITER WEST PLAZA

6661-6779 West Indiantown Road, Jupiter, FL 33458



PROPERTY FOR LEASE

- Join ALDI (coming soon), Pet Supermarket, Tijuana Flats, and Panera Bread, The UPS Store, H&R Block, and Mattress Firm
- Prominent location at the northwest corner of Indiantown Road and Central Boulevard, just east of I-95
- Average Tenant occupancy over 10 years with an over 95% average historical occupancy rate
- Easy access to Interstate 95 and Florida's Turnpike
- More than 105,408 cars pass the site daily

DEMOGRAPHIC SUMMARY

	3-MILE RADIUS	5-MILE RADIUS
Postal count population	53,577	91,465
Number of Households	20,692	38,704
Estimated Average Household Income	\$98,274	\$104,024
Estimated Median Household Income	\$68,877	\$71,763

Cohen Commercial Realty, Inc.

Bryan S. Cohen | info@cohencommercial.com

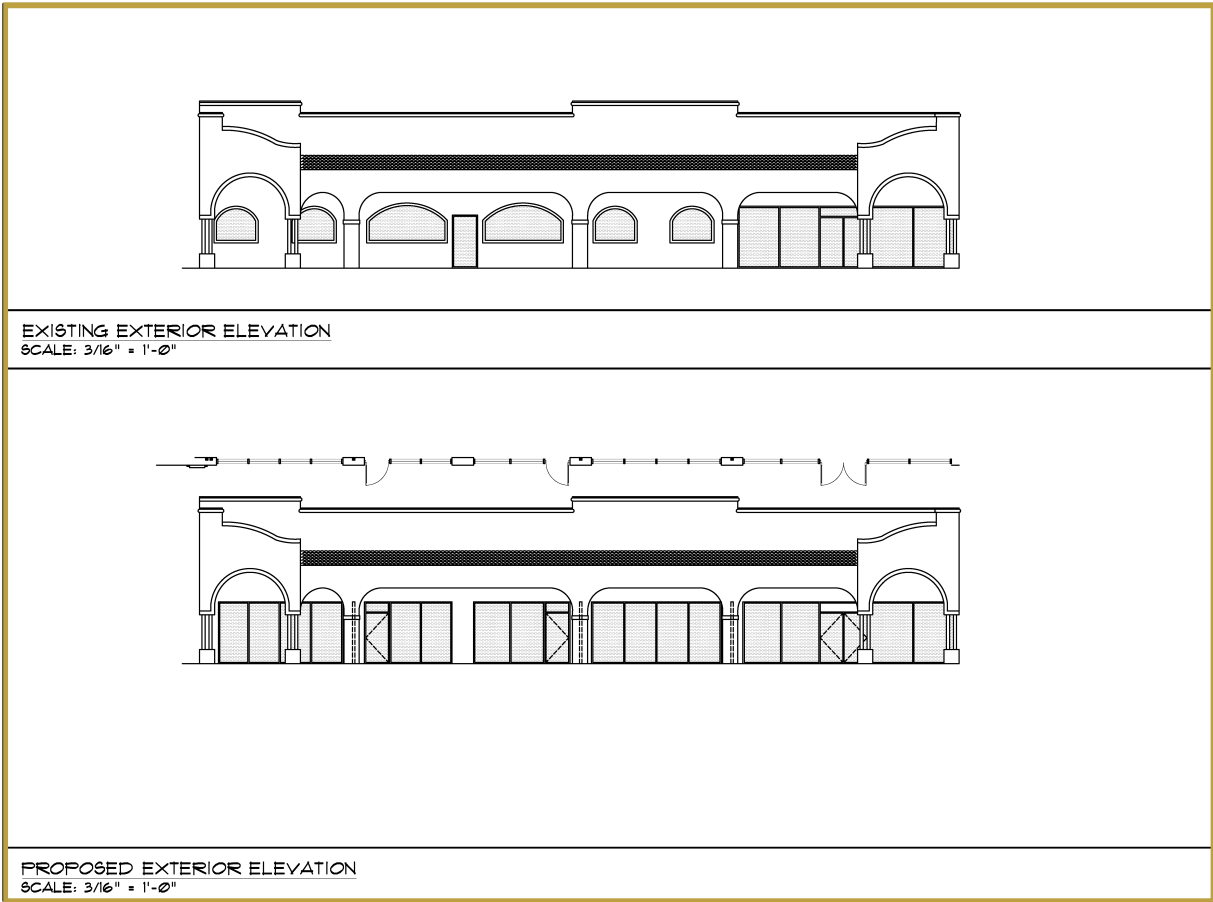
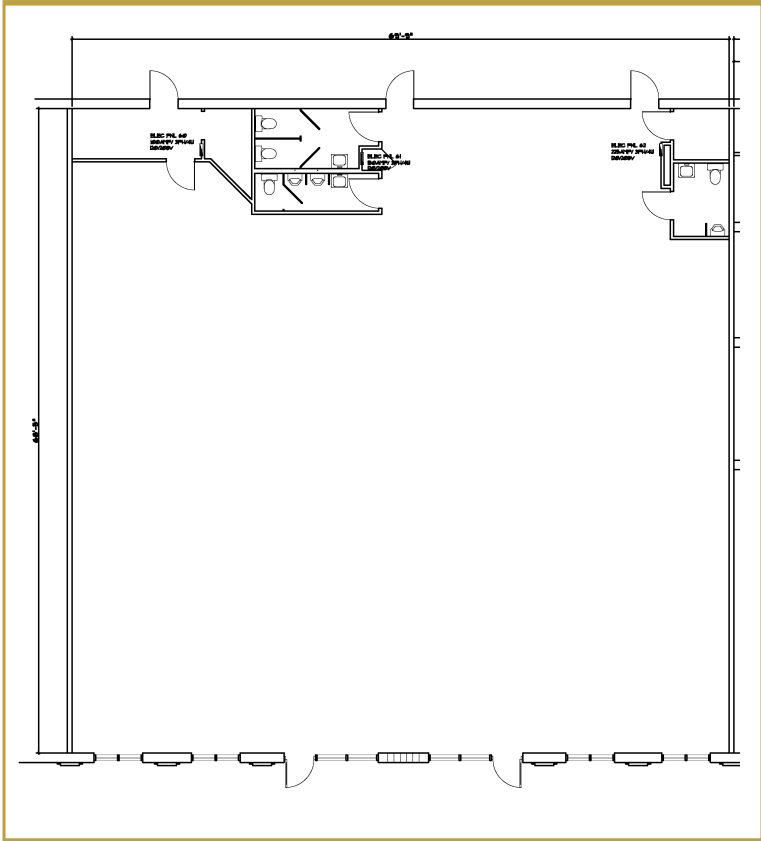
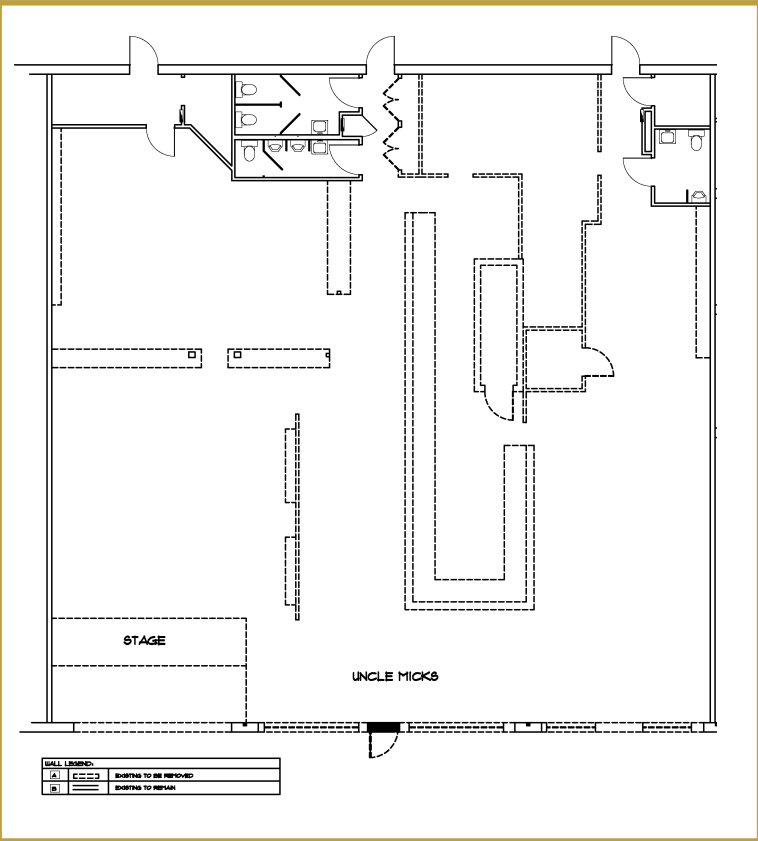
Office: 561.471.0212 • Leasing: 561.471.1299 • Fax: 561.471.5905

533 NORTHLAKE BOULEVARD • NORTH PALM BEACH, FL 33408 • POST OFFICE BOX 14127 • NORTH PALM BEACH, FL 33408

LICENSED REAL ESTATE BROKER

All information regarding this property has been obtained from sources believed to be reliable. We make no guarantee, warranty, or representation about it. It independently confirm its accuracy and completeness. Any projections, assumptions, opinions or estimates used are for example only and do not represent current or future performance. You and your advisors should conduct a careful, independent investigation of the property to determine to your satisfaction the suitability of the property for your needs.

SPACE PLANS - BAY 62



TENANT ROSTER

16	Velocity Community Credit Union	1,400 SF	40	AVAILABLE	880 SF
17	Jupiter Family Dentistry	1,400 SF	41	Anthony's Barber Shop	880 SF
18-19	Nitrogen Sushi Grille & Bar	2,800 SF	42	Techsmart	660 SF
20-21	Cheeseburgers and More	2,800 SF	43	Paul David Jewelry, Inc.	880 SF
22	Cheeseburgers and More	6,386 SF	44	Pet Supermarket	6,720 SF
23A	Quick Weight Loss Centers, Inc.	1,457 SF	45	ALDI	46,328 SF
23B	Beauty Boutique	2,006 SF	46	East Coast Pool Supply	1,700 SF
23C	CR Chicks	1,700 SF	47	Jupiter Liquors	1,700 SF
23D-28	Keep Flippin	4,032 SF	48	Fabulous Nails and Wax	1,700 SF
24	Palm Beach Ice Cream	1,000 SF	49	Mr. Gyros	1,400 SF
25	Beauty Boutique	1,000 SF	50	The UPS Store	1,369 SF
26-27	Medallion Sports	2,000 SF	51	3 Natives	900 SF
29	Precise Property	1,250 SF	52	Tropical Smoothie	1,200 SF
30	True Vine Chiropractic	1,750 SF	53	H&R Block	1,300 SF
31-33	Title Boxing Club	4,200 SF	54	Gio's Pizza, Inc.	1,300 SF
34	Performing Arts Academy of Jupiter	8,350 SF	55	Ankle & Foot Care Center	1,400 SF
35	Performing Arts Academy of Jupiter	2,050 SF	56-59	Panera Bread	4,990 SF
36	Westside Cleaners	1,400 SF	60	AVAILABLE	1,400 SF
37	AVAILABLE	1,400 SF	62	AVAILABLE	3,500 SF
38	The Chocolate Spectrum	880 SF	63	Washtowne USA	2,100 SF
39	Real Estate Office	880 SF			

Outparcels

8	Duffy's	5,570 SF	4	Mattress Firm	3,962 SF
7	Park Avenue BBQ	5,041 SF	3	Shell	2,000 SF
6	IHOP	2,200 SF	2	Wells Fargo	4,000 SF
5B	Tijuana Flats	2,550 SF	1	Mobile Oil	925 SF
5A	Sweet Frog Frozen Yogurt	1,417 SF			



Cohen Commercial Realty, Inc.

Bryan S. Cohen | info@cohencommercial.com

Office: 561.471.0212 • Leasing: 561.471.1299 • Fax: 561.471.5905

533 NORTHLAKE BOULEVARD • NORTH PALM BEACH, FL 33408 • POST OFFICE BOX 14127 • NORTH PALM BEACH, FL 33408

LICENSED REAL ESTATE BROKER

All information regarding this property has been obtained from sources believed to be reliable. We make no guarantee, warranty, or representation about it. It independently confirm its accuracy and completeness. Any projections, assumptions, opinions or estimates used are for example only and do not represent current or future performance. You and your advisors should conduct a careful, independent investigation of the property to determine to your satisfaction the suitability of the property for your needs.