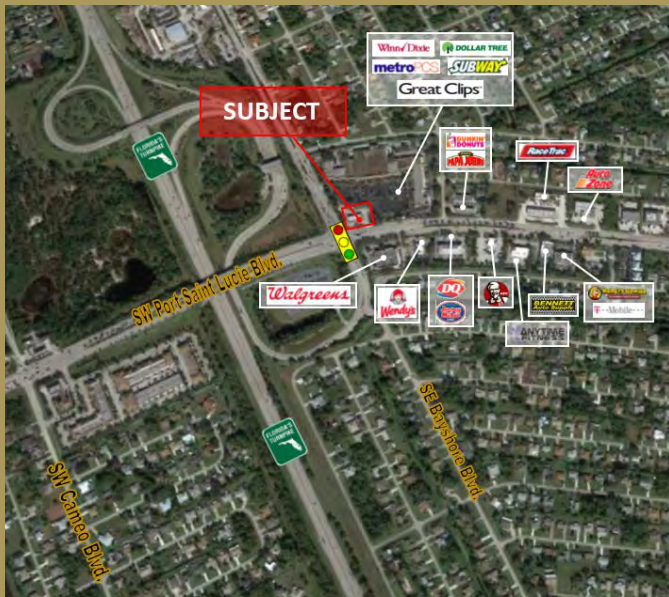




299 SW PORT ST. LUCIE BLVD.

Port St. Lucie, FL 34984



DEMOGRAPHIC SUMMARY

	3-MILE RADIUS	5-MILE RADIUS
Postal count population	77,591	164,353
Median age	39.6	42.9
Estimated Average Household Income	\$66,128	\$67,084
Estimated Median Household Income	\$50,915	\$50,369

PROPERTY FOR LEASE

- Fully signalized intersection
- Access from both Bayshore and Port Saint Lucie Boulevard
- Approximately 39,000 SF (0.9 Acres)
- Approximately 65,700 cars pass the site daily
- Zoning: CG (Commercial General)

Cohen Commercial Realty, Inc.

Bryan S. Cohen | info@cohencommercial.com

Office: 561.471.0212 • Leasing: 561.471.1299 • Fax: 561.471.5905

533 NORTHLAKE BOULEVARD • NORTH PALM BEACH, FL 33408 • POST OFFICE BOX 14127 • NORTH PALM BEACH, FL 33408

LICENSED REAL ESTATE BROKER

All information regarding this property has been obtained from sources believed to be reliable. We make no guarantee, warranty, or representation about it. It independently confirm its accuracy and completeness. Any projections, assumptions, opinions or estimates used are for example only and do not represent current or future performance. You and your advisors should conduct a careful, independent investigation of the property to determine to your satisfaction the suitability of the property for your needs.

