



# 13901 US-1, SUITE 7

Juno Beach, Florida 33408



## PROPERTY FOR LEASE

- Turn-key medical available!
- Approximately 1,100 square feet available
- Premiere location at the corner of Donald Ross Rd and US-1 in Juno Beach
- Motivated Landlord with aggressive lease terms

## DEMOGRAPHIC SUMMARY

	3-MILE RADIUS	5-MILE RADIUS
Postal count population	30,889	103,679
Median age	57.2	50.4
Estimated average household income	\$128,732	\$110,765
Estimated median household income	\$84,700	\$75,745

Cohen Commercial Realty, Inc.

Bryan S. Cohen | info@cohencommercial.com

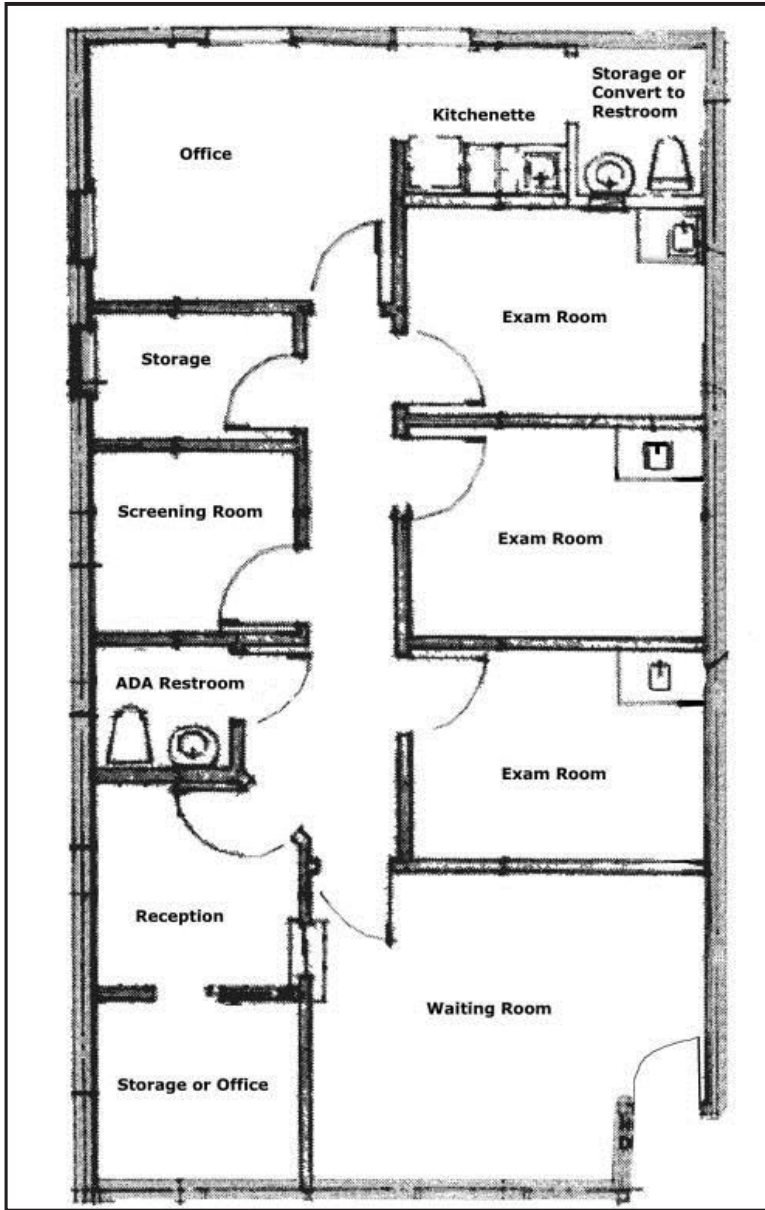
Office: 561.471.0212 • Leasing: 561.471.1299 • Fax: 561.471.5905

533 NORTHLAKE BOULEVARD • NORTH PALM BEACH, FL 33408 POST OFFICE BOX 14127 • NORTH PALM BEACH, FL 33408

### LICENSED REAL ESTATE BROKER

All information regarding this property has been obtained from sources believed to be reliable. We make no guarantee, warranty, or representation about it. It independently confirm its accuracy and completeness. Any projections, assumptions, opinions or estimates used are for example only and do not represent current or future performance. You and your advisors should conduct a careful, independent investigation of the property to determine to your satisfaction the suitability of the property for your needs.

## SITE PLAN



## INTERIOR PHOTOS



Cohen Commercial Realty, Inc.

Bryan S. Cohen | [info@cohencommercial.com](mailto:info@cohencommercial.com)

Office: 561.471.0212 • Leasing: 561.471.1299 • Fax: 561.471.5905

533 NORTHLAKE BOULEVARD • NORTH PALM BEACH, FL 33408 POST OFFICE BOX 14127 • NORTH PALM BEACH, FL 33408

LICENSED REAL ESTATE BROKER

All information regarding this property has been obtained from sources believed to be reliable. We make no guarantee, warranty, or representation about it. It independently confirm its accuracy and completeness. Any projections, assumptions, opinions or estimates used are for example only and do not represent current or future performance. You and your advisors should conduct a careful, independent investigation of the property to determine to your satisfaction the suitability of the property for your needs.